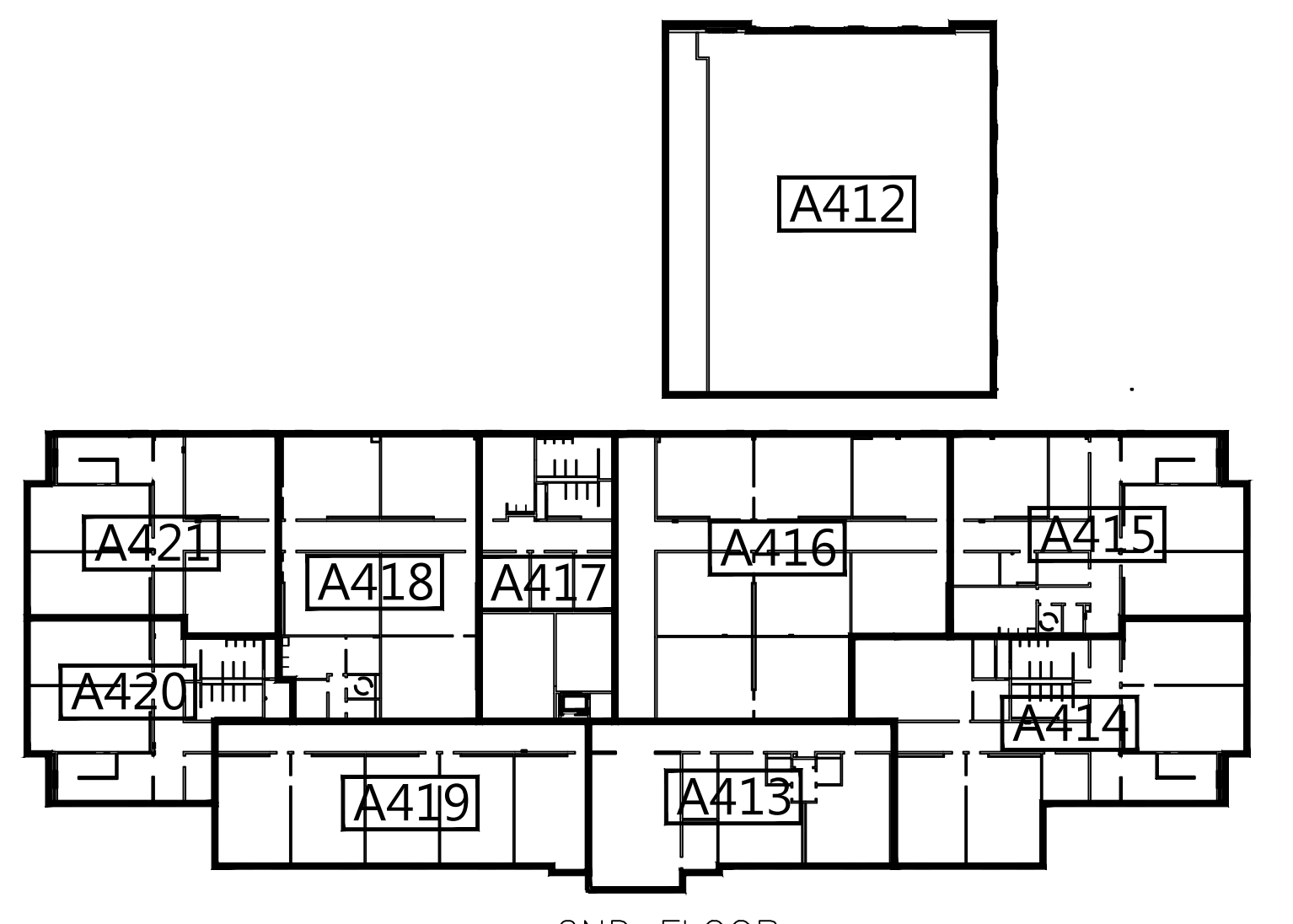


1 SECOND FLOOR PLAN  
 1/16" = 1'-0" 48,417 S.F.

PROJECT AREAS	
LEVEL	AREA - SF
FIRST FLOOR	79,979 S.F.
SECOND FLOOR	48,417 S.F.
TOTAL	128,396 S.F.

PLUMBING FIXTURE SUMMARY	
TOILETS	
FIRST FLOOR	REQUIRED: 26 CLASSROOMS x 20 STUDENTS = 520 STUDENTS 260 BOYS = 9 WC, 12 UR, 6 LAV 260 GIRLS = 12 WC, 6 LAV
FIRST FLOOR	PROVIDED: 26 CLASSROOMS x 20 STUDENTS = 520 STUDENTS 260 BOYS = 9 WC, 12 UR, 6 LAV 260 GIRLS = 14 WC, 8 LAV
SECOND FLOOR	REQUIRED: 35 CLASSROOMS x 20 STUDENTS = 700 STUDENTS 350 BOYS = 9 WC, 12 UR, 6 LAV 350 GIRLS = 14 WC, 6 LAV
SECOND FLOOR	PROVIDED: 35 CLASSROOMS x 20 STUDENTS = 875 STUDENTS 350 BOYS = 9 WC, 12 UR, 6 LAV 350 GIRLS = 14 WC, 8 LAV
DRINKING FOUNTAINS	
FIRST FLOOR	REQUIRED: 26 CLASSROOMS x 20 STUDENTS = 520 STUDENTS 520 STUDENTS / 100 STUDENTS = 6 DRINKING FOUNTAINS
FIRST FLOOR	PROVIDED: TOTAL OF 12 DRINKING FOUNTAINS
SECOND FLOOR	REQUIRED: 35 CLASSROOMS x 20 STUDENTS = 700 STUDENTS 700 STUDENTS / 100 STUDENTS = 7 DRINKING FOUNTAINS
SECOND FLOOR	PROVIDED: TOTAL OF 9 DRINKING FOUNTAINS

FINISH LEGEND				
TYP.	FLOOR	BASE	WALLS	CEILING
1	2"x2" CERAMIC TILE	CERAMIC TILE	EPOXY PAINT	WATER RESIST. ABUSE RESIST. GP/W/ EPOXY PAINT
2	12"x12" PORCELAIN TILE	RESILIENT	EPOXY PAINT	TYPE 2 F.R. 2X2 A.T.
3	SEALED CONCRETE	NONE	PAINT	EXPOSED STRUCT. - PT.
4	LVT	RESILIENT	PAINT	TYPE 3 2X2 A.T.
5	VCT	RESILIENT	PAINT	TYPE 1 2X2 A.T.
6	VCTT	RESILIENT	PAINT	TYPE 1 2X2 A.T.
7	WOOD FLOORING	WOOD	EPOXY PAINT	ACoustICAL DECK - PAINT
8	2"x2" CERAMIC TILE	CERAMIC TILE	EPOXY PAINT	TYPE 1 2X2 A.T.
9	RESIN. TREATS PAINT RISERS RUBBER LANDING	RESILIENT	EPOXY PAINT	TYPE 2 F.R. 2X2 A.T.
10	QUARRY TILE	QUARRY TILE	EPOXY PAINT	EIFS
11	QUARRY TILE	QUARRY TILE	EPOXY PAINT	TYPE 4 2X2 A.T.
12	SEALED CONCRETE	NONE	EPOXY PAINT	TYPE 2 F.R. 2X2 A.T.
13	4"x4" PORCELAIN	6"x8" PORCELAIN	EPOXY PAINT	TYPE 2 F.R. 2X2 A.T.
14	12"x12" PORCELAIN TILE	RESILIENT	EPOXY PAINT	TYPE 3 2X2 A.T.
15	VCTT	RESILIENT	PAINT	TYPE 3 2X2 A.T.
16	12"x12" PORCELAIN TILE	RESILIENT	EPOXY PAINT	A.R. GYP. - PAINT
17	RUBBER	RESILIENT	EPOXY PAINT	TYPE 1 2X2 A.T.
18	VCTT (NIC)	RESILIENT (NIC)	PAINT	A.R. GYP. - PAINT
19	SEALED CONCRETE	NONE	PAINT	TYPE 1 2X2 A.T.
20	VCTT MAT (N.L.C.)	RESILIENT	EPOXY PAINT	TYPE 2 F.R. 2X2 A.T.
21	VCTT MAT (N.L.C.)	RESILIENT	EPOXY PAINT @ GYP - HI	ACoustICAL DECK - PAINT
22	WOOD FLOOR	WOOD	EPOXY PAINT @ GYP. - HI	ACoustICAL DECK - PAINT
23	WOOD FLOOR	WOOD	EPOXY PAINT	ABUSE RESISTANT GYP. PAINT



KEY PLAN  
 CAPITAL OUTLAY/LOCAL FUNDS - 775 FTE/60 I.U.

architecture  
 engineering  
 interiors

LINDSAY POPE BRAYFIELD CLIFFORD  
 344 WEST PIKE STREET  
 LAWRENCEVILLE, GA 30046  
 770 963 8989  
 770 822 9492 FAX  
 www.lpbcltd.com

GAINESVILLE CITY SCHOOLS  
 508 OAK STREET  
 GAINESVILLE, GA 30501

ENOTA ELEMENTARY SCHOOL  
 REPLACEMENT  
 1340 ENOTA AVENUE NE  
 GAINESVILLE, GA 30501

EDITION  
 50% REVIEW  
 7-7-2016

PROJECT NO.: 215057  
 DRAWN BY: SL  
 CHECKED BY: SP  
 APPROVED BY: BP  
 PLOT DATE: 7-7-2016  
 © 2016 ALL RIGHTS RESERVED LINDSAY POPE BRAYFIELD CLIFFORD & ASSOCIATES, INC.

SECOND FLOOR PLAN

A102