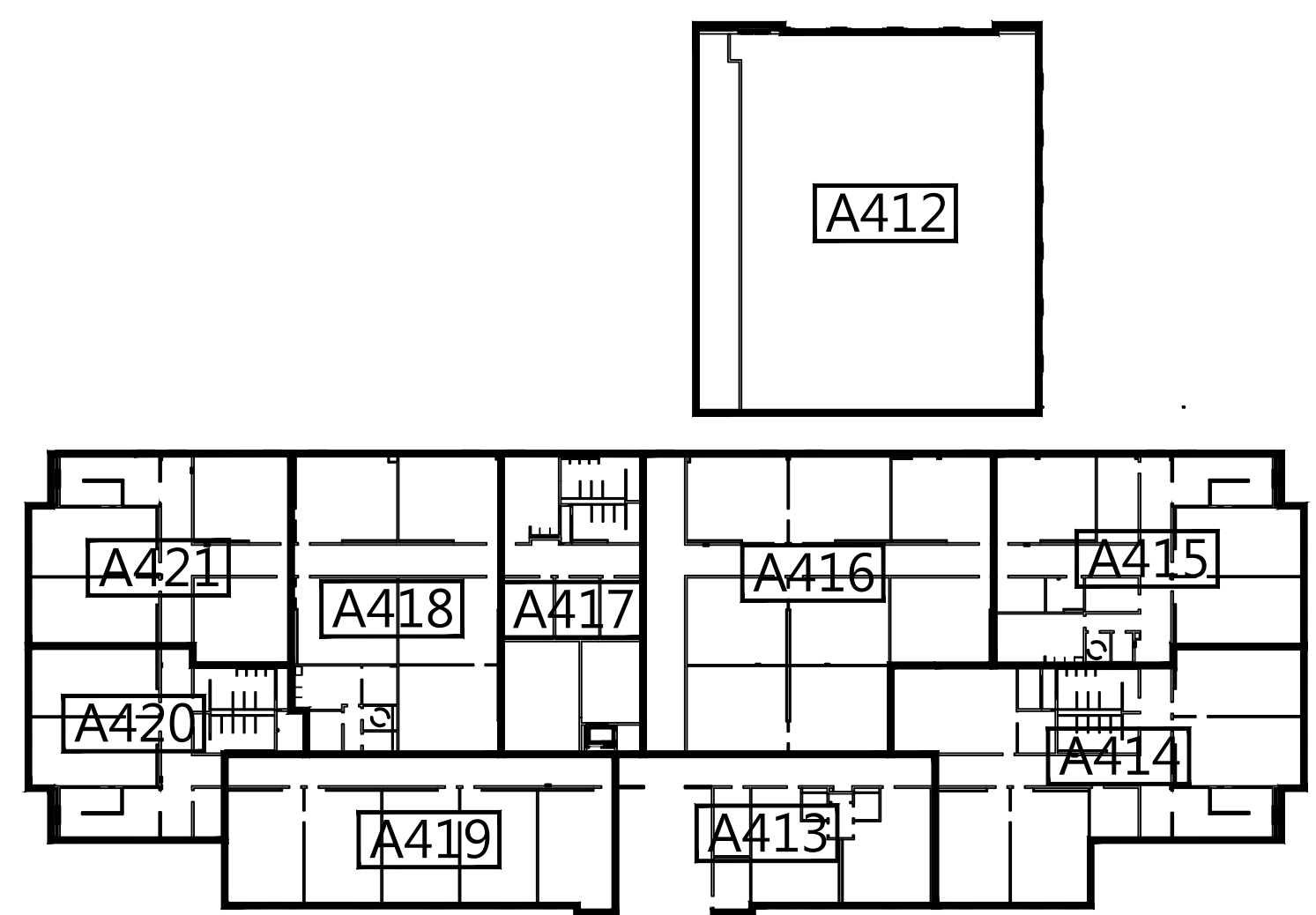


1 SECOND FLOOR PLAN  
1/16" = 1'-0" 48,417 S.F.

PROJECT AREAS	
LEVEL	AREA - SF
FIRST FLOOR	79,979 S.F.
SECOND FLOOR	48,417 S.F.
TOTAL	128,396 S.F.

PLUMBING FIXTURE SUMMARY	
FIRST FLOOR	<b>TOILETS</b>
	REQUIRED: 26 CLASSROOMS x 20 STUDENTS = 520 STUDENTS 260 BOYS = 9 WC, 12 UR, 6 LAV 260 GIRLS = 12 WC, 6 LAV
SECOND FLOOR	<b>TOILETS</b>
	REQUIRED: 35 CLASSROOMS x 20 STUDENTS = 700 STUDENTS 350 BOYS = 9 WC, 12 UR, 6 LAV 350 GIRLS = 14 WC, 6 LAV
FIRST FLOOR	<b>DRINKING FOUNTAINS</b>
	REQUIRED: 26 CLASSROOMS x 20 STUDENTS = 520 STUDENTS 520 STUDENTS / 100 STUDENTS = 6 DRINKING FOUNTAINS
SECOND FLOOR	<b>DRINKING FOUNTAINS</b>
	REQUIRED: 35 CLASSROOMS x 20 STUDENTS = 700 STUDENTS 700 STUDENTS / 100 STUDENTS = 7 DRINKING FOUNTAINS

FINISH LEGEND				
TYP.	FLOOR	BASE	WALLS	CEILING
1	2"x2" CERAMIC TILE	CERAMIC TILE	EPOXY PAINT	WATER RESIST. ABUSE RESIST. GPOW W/ EPOXY PAINT
2	12"x12" PORCELAIN TILE	RESILIENT	EPOXY PAINT	TYPE 2 F.R. 2X2 A.T.
3	SEALED CONCRETE	NONE	PAINT	EXPOSED STRUCT.-PT.
4	LVT	RESILIENT	PAINT	TYPE 3 2X2 A.T.
5	VCT	RESILIENT	PAINT	TYPE 1 2X2 A.T.
6	VCTT	RESILIENT	PAINT	TYPE 1 2X2 A.T.
7	WOOD FLOORING	WOOD	EPOXY PAINT	ACoustICAL DECK - PAINT
8	2"x2" CERAMIC TILE	CERAMIC TILE	EPOXY PAINT	TYPE 1 2X2 A.T.
9	RESIN. TREATS PAINT RISERS RUBBER LANDING	RESILIENT	EPOXY PAINT	TYPE 2 F.R. 2X2 A.T.
10	QUARRY TILE	QUARRY TILE	EPOXY PAINT	EIFS
11	QUARRY TILE	QUARRY TILE	EPOXY PAINT	TYPE 4 2X2 A.T.
12	SEALED CONCRETE	NONE	EPOXY PAINT	TYPE 2 F.R. 2X2 A.T.
13	4"x4" PORCELAIN	6"x8" PORCELAIN	EPOXY PAINT	TYPE 2 F.R. 2X2 A.T.
14	12"x12" PORCELAIN TILE	RESILIENT	EPOXY PAINT	TYPE 3 2X2 A.T.
15	VCTT	RESILIENT	PAINT	TYPE 3 2X2 A.T.
16	12"x12" PORCELAIN TILE	RESILIENT	EPOXY PAINT	A.R. GYP. - PAINT
17	RUBBER	RESILIENT	EPOXY PAINT	TYPE 1 2X2 A.T.
18	VCTT (NIC)	RESILIENT (NIC)	PAINT	A.R. GYP. - PAINT
19	SEALED CONCRETE	NONE	PAINT	TYPE 1 2X2 A.T.
20	VCTT MAT (N.I.C.)	RESILIENT	EPOXY PAINT	TYPE 2 F.R. 2X2 A.T.
21	VCTT MAT (N.I.C.)	RESILIENT	EPOXY PAINT @ GYP - HI	ACoustICAL DECK - PAINT
22	WOOD FLOOR	WOOD	EPOXY PAINT @ GYP. - HI	ACoustICAL DECK - PAINT
23	WOOD FLOOR	WOOD	EPOXY PAINT	ABUSE RESISTANT GYP. PAINT



KEY PLAN  
CAPITAL OUTLAY/LOCAL FUNDS - 775 FTE/60 I.U.

architecture  
engineering  
interiors

LINDSAY POPE BRAYFIELD CLIFFORD  
344 WEST PIKE STREET  
LAWRENCEVILLE, GA 30046  
770 963 8989  
770 822 9492 FAX  
www.lpbcltd.com

GAINESVILLE CITY SCHOOLS

508 OAK STREET  
GAINESVILLE, GA 30501

ENOTA ELEMENTARY SCHOOL  
REPLACEMENT

1340 ENOTA AVENUE NE  
GAINESVILLE, GA 30501

EDITION  
50% REVIEW  
7-7-2016

PROJECT NO.: 215057

DRAWN BY: SL  
CHECKED BY: SP  
APPROVED BY: BP  
PLOT DATE: 7-7-2016

© 2016 ALL RIGHTS RESERVED LINDSAY POPE BRAYFIELD CLIFFORD & ASSOCIATES, INC.

SECOND FLOOR PLAN

A102